

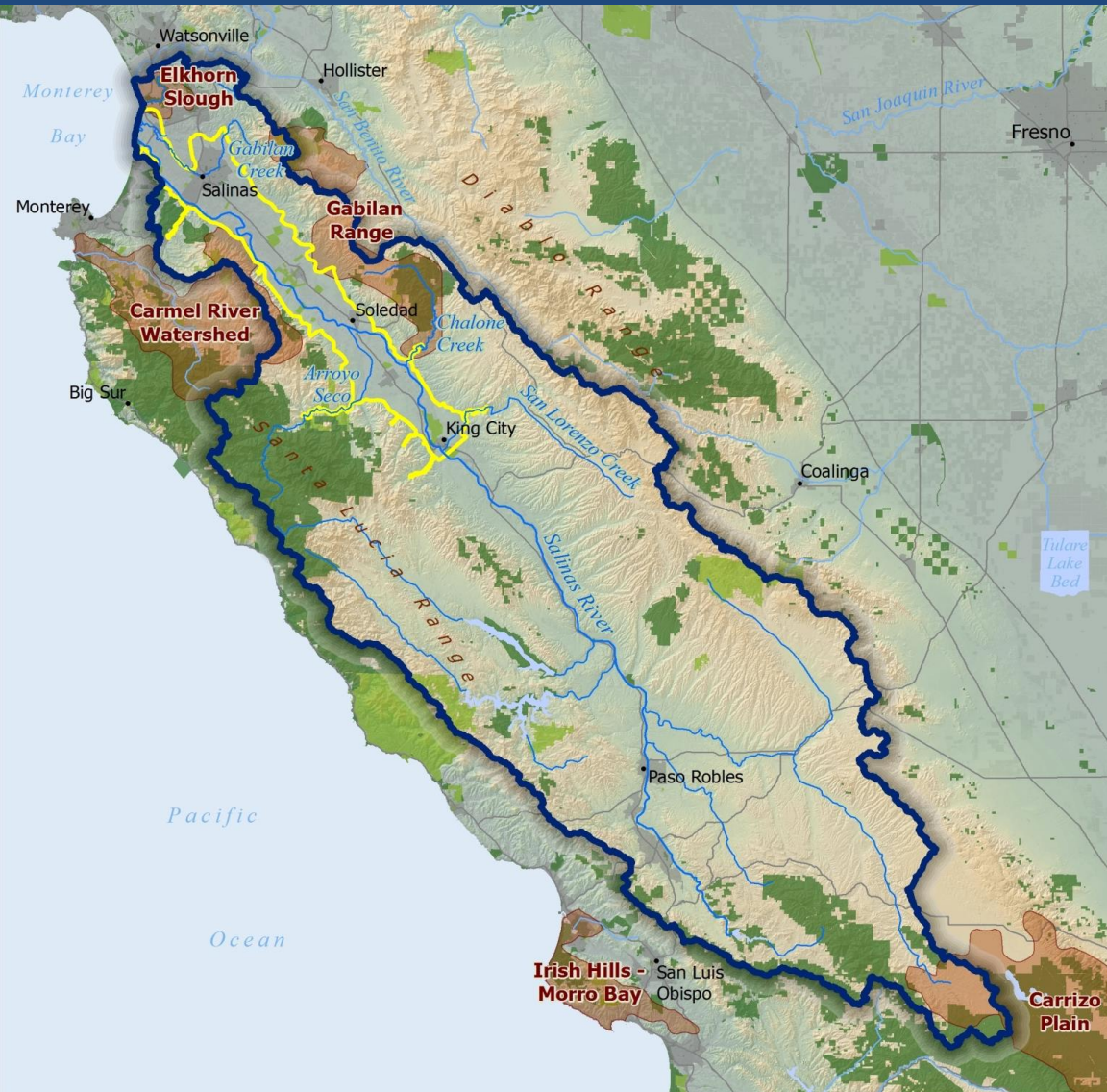
# Multi-benefit Floodplain Management on the Salinas River: Designing Solutions for Fish and Farms

Sasha Gennet, Senior Scientist, The Nature Conservancy

CA Naturalist Conference  
October 18, 2014



# Salinas River and Floodplain



- Ag industry
  - ~75% of leafy greens on US market
- Eco values
  - Steelhead
  - Migratory birds
  - Rich soil, pollination, fresh water for farms and towns
  - 90% riparian loss

# Steelhead



- Distinct Steelhead Populations
- Gabilan Creek
- Southern Salinas Basin
- Arroyo Seco
- Steelhead Spawning and Rearing Habitat
- Major Streams
- 100 Year Floodplain
- Public and Private Protected Lands
- Conservation Easements
- Urban Areas
- County Boundary
- Major Highways/Roads



Map created by TNC CA Science, March, 2011  
 N:\Central\_Coast\Projects\Mnt\Sites\Salinas\_River\mxdsmnt\_SalinasRiver\_BAP\_Targets\_Salmon.mxd

# Project History



Biodiversity!!!

Wilderness

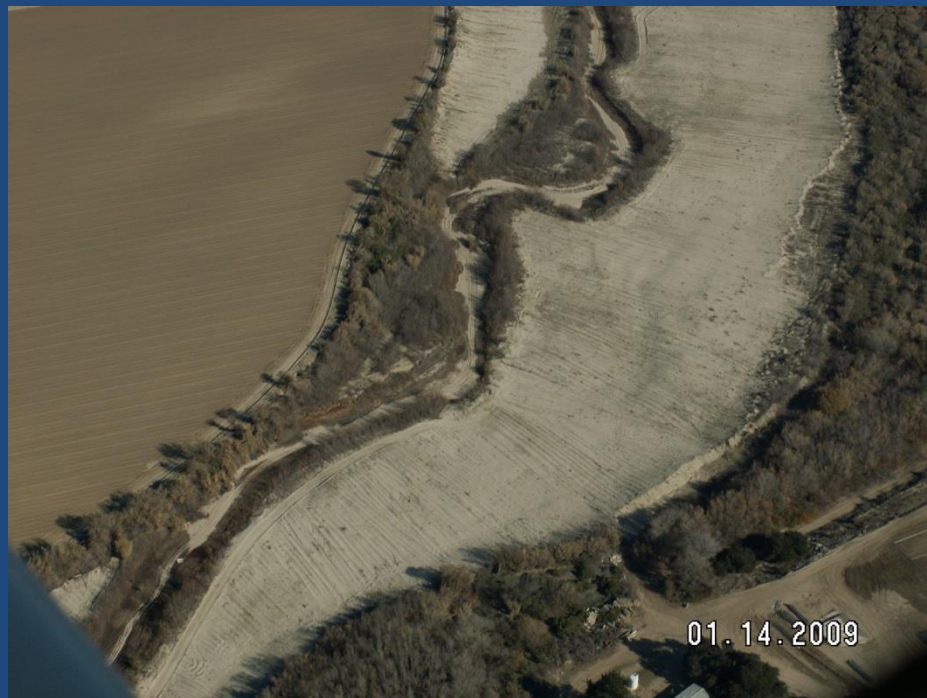
Rangelands and  
Rivers

Ag lands

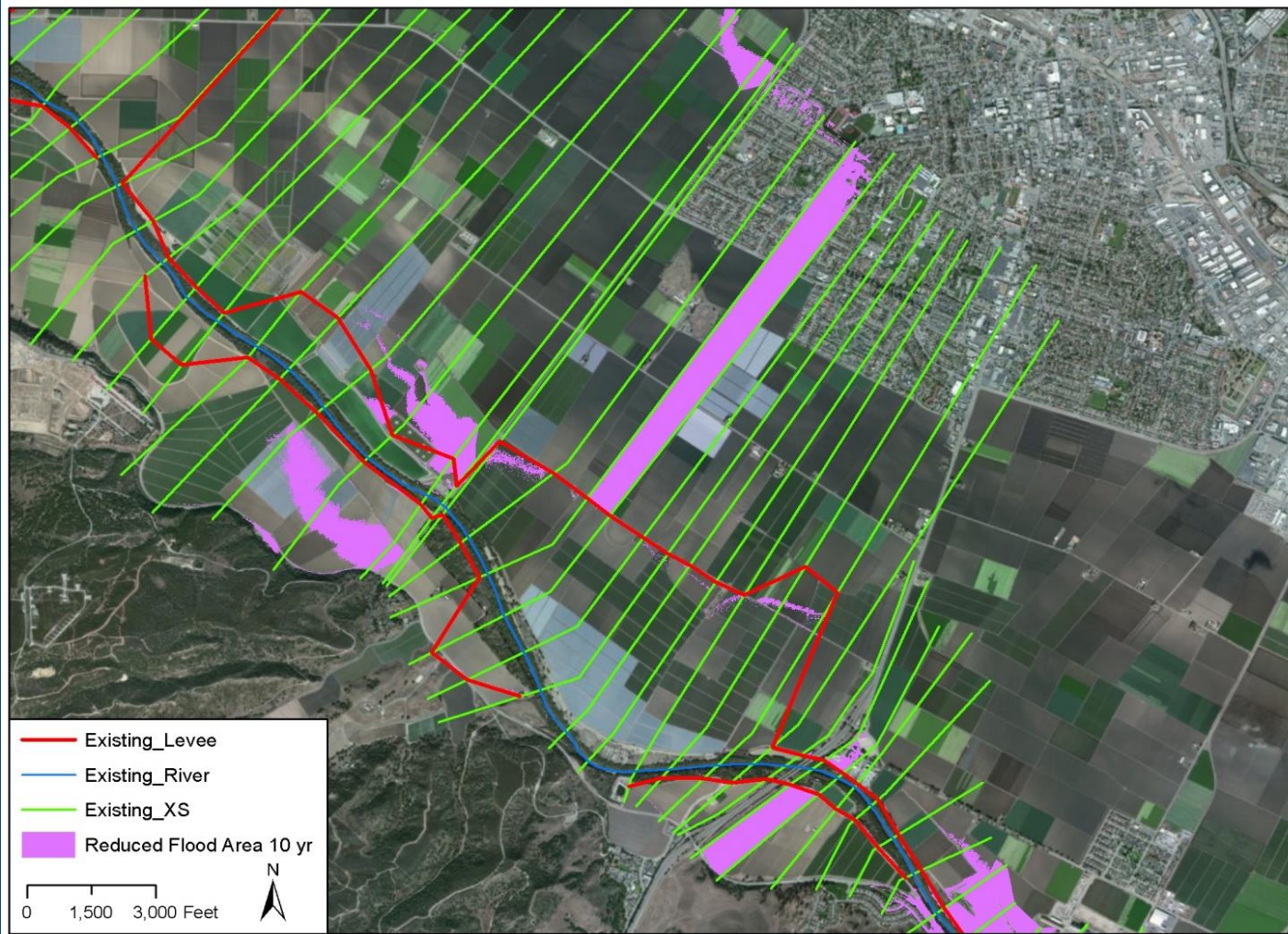
# Flood Risk



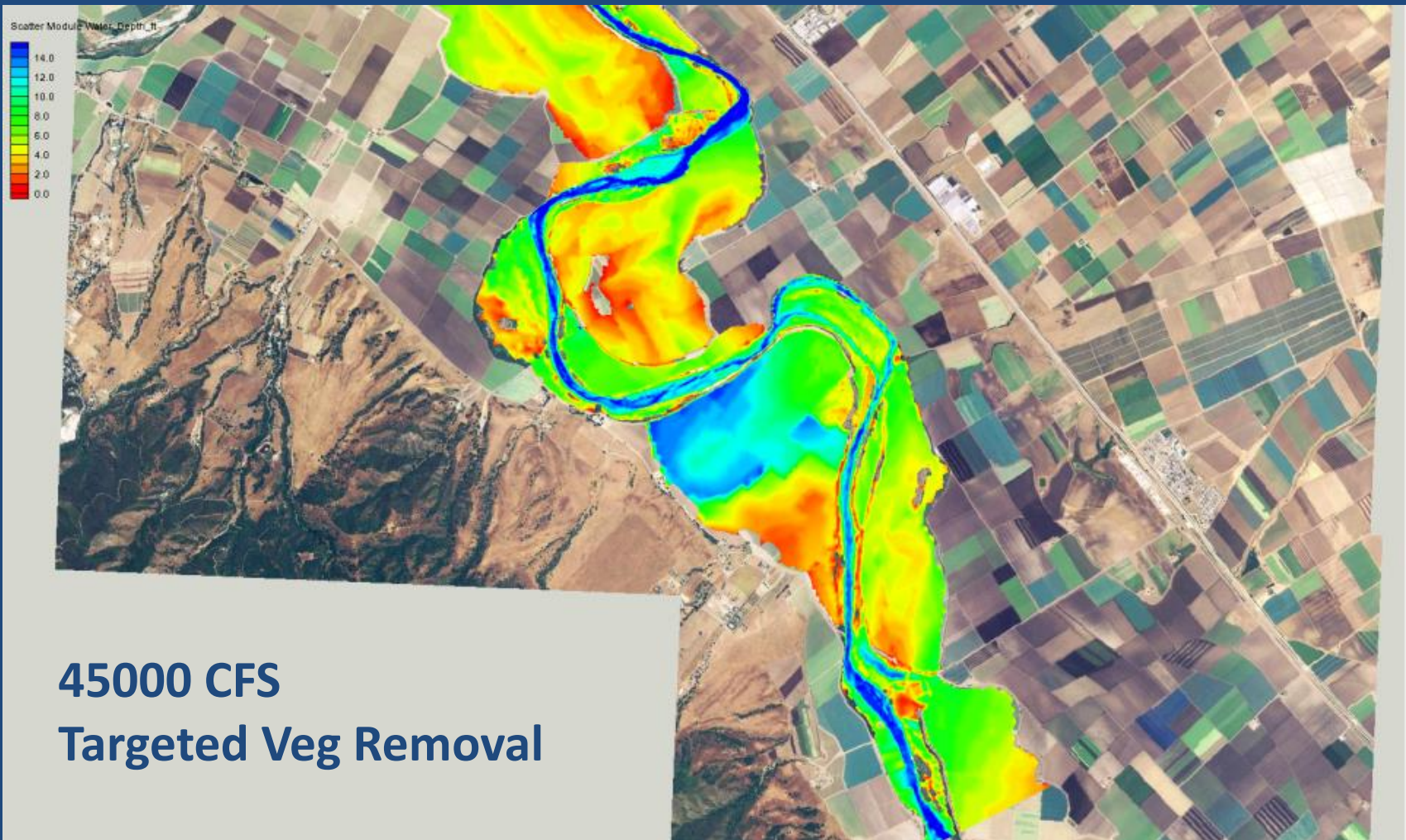
# Past Channel Maintenance: Bank to Bank Clearing



# Designing Solutions- Step 1. Better Data.

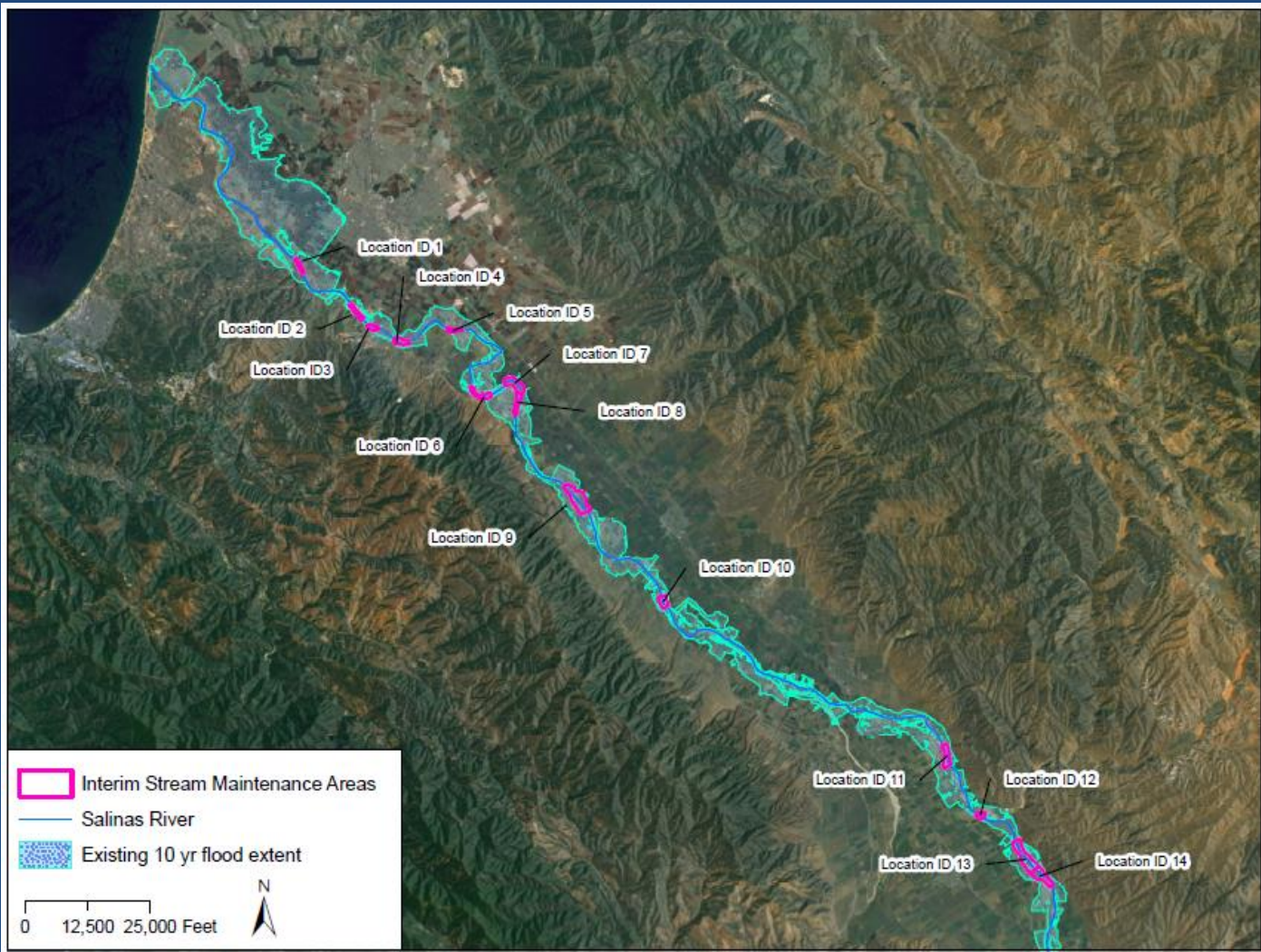


# Designing Solutions- Step 1. Better Data.

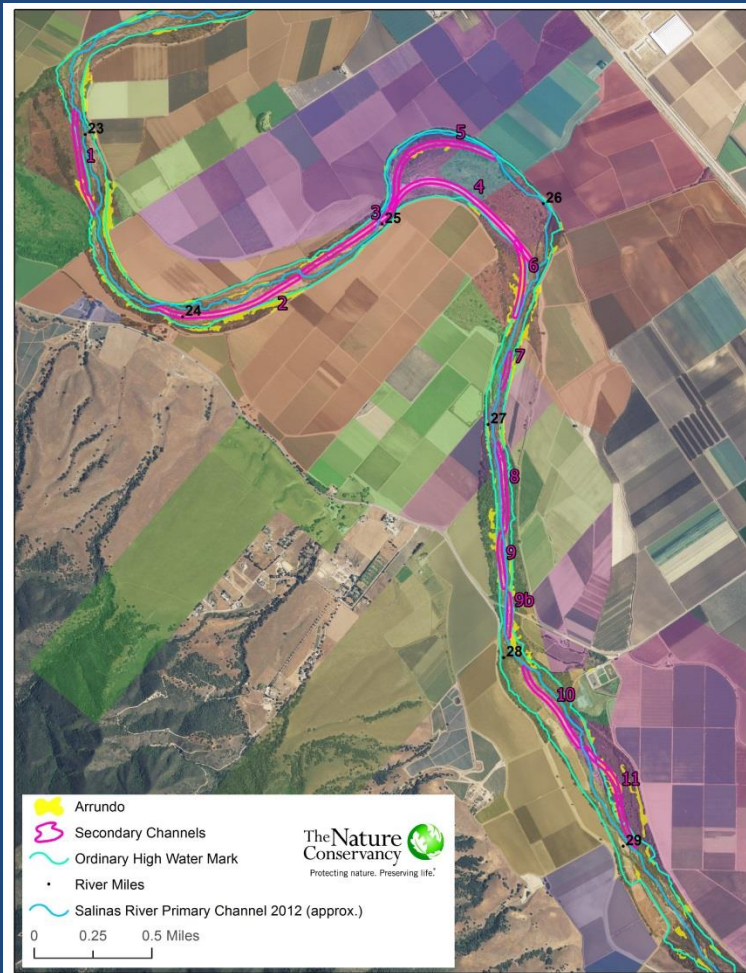




# Designing Solutions: Step 2. Pick Pilot Locations.



# Designing Solutions: Step 3. Design Workshops, Field Reconnaissance



# Designing Solutions:

## Step 4. Permits and Financing

- Army Corp of Engineers
- US Fish and Wildlife
- NOAA/NMFS
- CA Dept. Fish and Wildlife
- Monterey County Water Resources Agency
- California Water Board
- Monterey Resource Conservation District
- Growers' LLC

# Step 5. Demo Implementation, Monitoring, Mitigation



Before



After

# Designing Solutions: Next Steps. Pilots to Whole Systems

- Demos are implemented, successful, become model for high-risk areas along the entire river
- New finance mechanisms developed
- Additional design elements included (detention basins, setbacks)
- Additional ecosystem services and habitat elements included (connectivity, water quality)

# Questions and Discussion

